

Public Document Pack



MEETING:	Overview and Scrutiny Committee
DATE:	Tuesday, 11 September 2018
TIME:	1.00 pm
VENUE:	Council Chamber, Barnsley Town Hall

SUPPLEMENTARY AGENDA

4 **Barnsley Safeguarding Adults Board (BSAB) Annual Report 2017-18** (*Pages 3 - 16*)

Revised BSAB Annual Report, 2017-18

To: Chair and Members of Overview and Scrutiny Committee:-

Councillors Ennis OBE (Chair), Bowler, G. Carr, Charlesworth, Clarke, Clements, Franklin, Frost, Gollick, Daniel Griffin, Hampson, Hand-Davis, Hayward, W. Johnson, Makinson, Mitchell, Murray, Phillips, Pickering, Pourali, Sheard, Sixsmith MBE, Tattersall, Williams, Wilson and Wright together with co-opted Members Ms P. Gould and Statutory Co-opted Member Ms K. Morrill (Parent Governor Representative)

Electronic Copies Circulated for Information

Diana Terris, Chief Executive

Andrew Frosdick, Executive Director Core Services

Rob Winter, Head of Internal Audit and Risk Management

Michael Potter, Service Director, Business Improvement and Communications

Ian Turner, Service Director, Council Governance

Press

This page is intentionally left blank

Barnsley Safeguarding Adults Board Annual Report 2017 - 2018



Welcome to the annual report of the Barnsley Safeguarding Adults Board

We decided that the 2017/2018 annual report would be shorter and easier to read. In addition there will be some videos to watch on our webpage:

<https://www.barnsley.gov.uk/safeguarding>

I am pleased to be able to tell you that the Board, and its member agencies, have continued to improve the ways we keep adults in Barnsley safe from harm and abuse. This report will tell you what the Board and its sub groups have been working on and lets you know what we have achieved. We have included a number of case studies to show how we have protected adults and how we will work to keep them safe in the future.

We are very grateful to the adults who have volunteered to be part of the SAFE sub group (Safeguarding Adults Forum (by) Experience) supporting the work of the Board by telling us about issues that need some or all of the partners to work to address. The issues are based on their own experiences or the experiences of adults they support.

From January to the end of March 2018; we received three requests for a Safeguarding Adult Review; we do these when an adult has died and they met the safeguarding adults' threshold. . The purpose of these reviews is to see if there are any lessons to be learned from how agencies supported the individual and how they worked together. In one case we have appointed an independent author to look at the sad death of a man who died in a house fire at his home address. The learning from all these cases will be shared on our website and included in training and newsletters. I am satisfied that the agencies that are represented on the board display a high level of commitment to keeping people safe. This was tested through a self-assessment process and a challenge process, which all partners contributed to.

Bob Dyson QPM,DL

What is abuse?

Any action, deliberate or unintentional, or a failure to take action or provide care that results in harm to the adult (this is called neglect). There are many different types of abuse; more details about abuse can be found on the Safeguarding Web site <https://www.barnsley.gov.uk/safeguarding>

The website tells you how you can tell us if you or someone you know is being harmed or abused.

Who do we help keep safe? (Adult Safeguarding)

All adults aged 18 and over who:

1. Need care and support, even if they are not getting care or support now (AND)
2. They are experiencing, or at risk of, abuse or neglect (AND)
3. As a result of their care and support needs is unable to protect themselves from either the risk of abuse or the experience of abuse or neglect.

Adults who are not able to speak up for themselves are particularly vulnerable and we all need to speak up to keep them safe.

Case Study – many thanks to the family for their story

Elsie had lived in a care home in Barnsley for two years, visited regularly by her family. The family reported that the carers were very kind but the management was not very effective and regularly lost items such as teeth, hearing aids and glasses which reduced Elsie's ability to communicate with family, friends and staff.

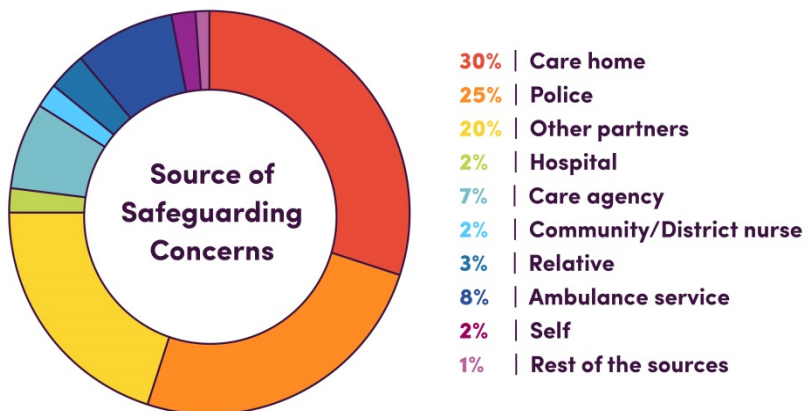
Sadly Elsie had to move to alternative care home at very short notice, which she and her family found very upsetting. However support from Adult Social Care (Social workers) gave them information and help to explore alternative care homes. Her family expressed real concern about the lack of notice given by the owner and manager to find somewhere for Elsie to live that they thought she would like.

Despite the hurried move and the worry caused to Elsie and her family, they report that Elsie is now very happy and she has blossomed partly due to getting new teeth, hearing aids and glasses. Active work to improve Elsie's mobility is ongoing to reduce the reliance on a hoist, which Elsie finds very distressing.

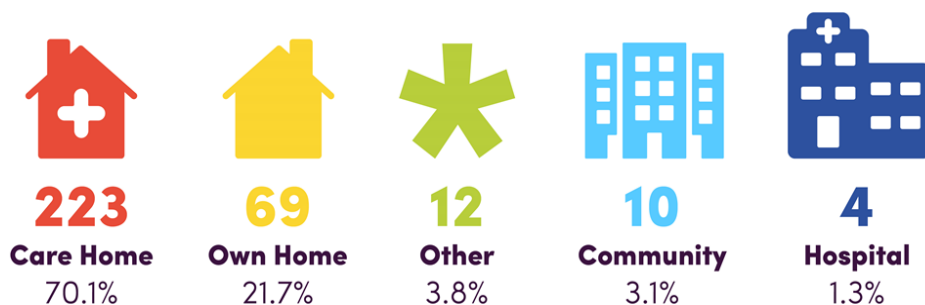
Elsie's family say she is happy, has put on weight and has more social interaction with other adults who live in the care home, who always make the family members feel welcome when they visit.

Safeguarding Data

Who told us they were worried about an adult?

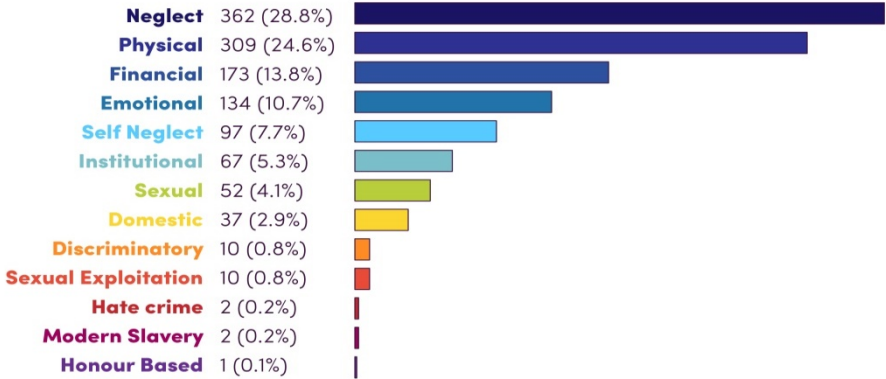


Location of Abuse



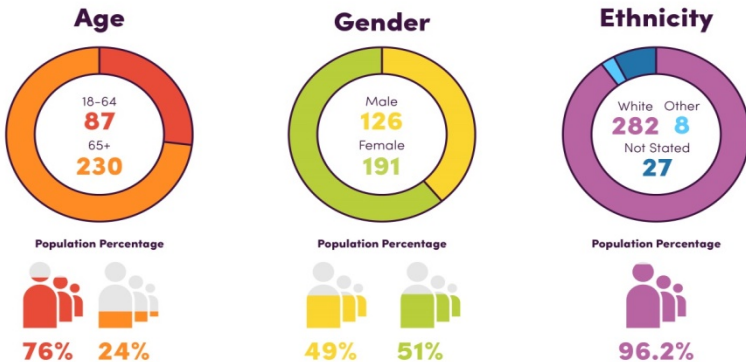
Care homes are required to share all concerns, even if no harm has taken place – e.g. adults with dementia throwing things at each other, the number of reports has increased from 2016/17.

Abuse Type



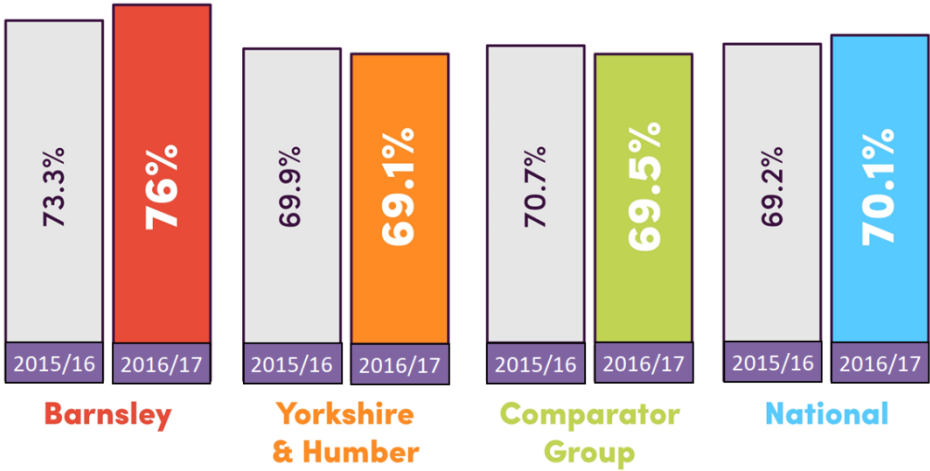
The data above includes cases that did not meet the threshold for a safeguarding enquiry and /or were addressed by more appropriate organisations (e.g. Police or specialist domestic violence services). The numbers include a small number of multiple abuse cases. The significant growth in the number of self-neglect cases is mirrored regionally and nationally and requires a strong multi agency response

Section 42 Enquiries | Started 317



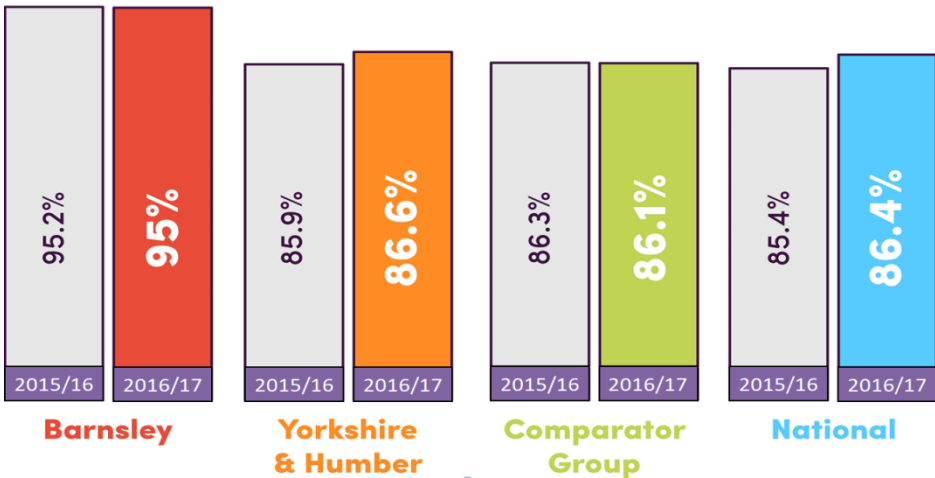
A section 42 enquiry (safeguarding enquiry) is started when an adult meets the three stage test (see page three) and they agree to a S42 enquiry or it is in their “best interests” as they are unable to make this decision for themselves

The proportion of people who use services who feel safe



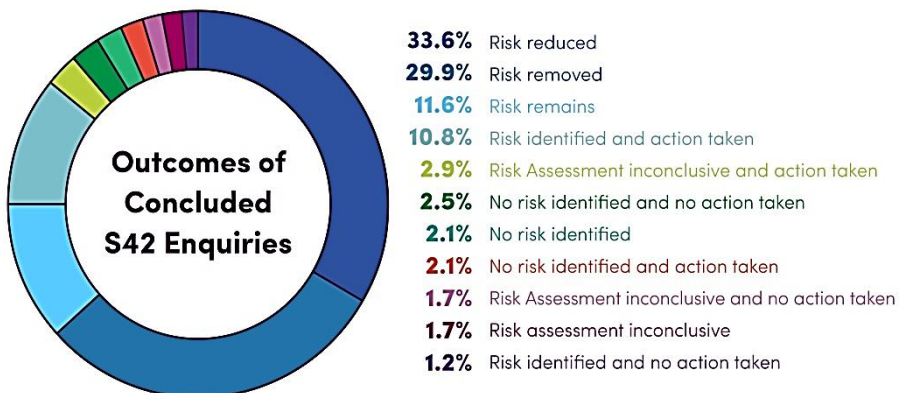
This chart shows that Barnsley adults feel safer in 2016/17 than they did in 2015/16 and feel safer than adults in other areas.

The proportion of people who use services who say that those services have made them feel safe and secure



This chart shows that Barnsley adults feel almost as safe in 2016/17 as they did in 2015/16, and feel safer than adults in other areas.

Impact of safeguarding on the risks experienced by the adult



Some adults choose to remain in contact with the person/people causing the harm, rather than lose their support and this is often the reason that risks remain to the adult at the end of the safeguarding journey.

**Our priorities to keep adults
in Barnsley safe in
2017 - 2018**

Put the adult who has been harmed or who is at risk of harm at the centre of everything we do. Listen to their views to find out what we can do to improve the safety of adults.

Hold board members to account – are we/they doing enough to keep adults safe.

Collect and share information about how well we are keeping adults safe and what more we could do.

Make sure our workers and volunteers get the training they need to provide safe services and to share concerns if they think an adult is being hurt or abused.

Review our policies and guidance to make sure we are constantly improving.

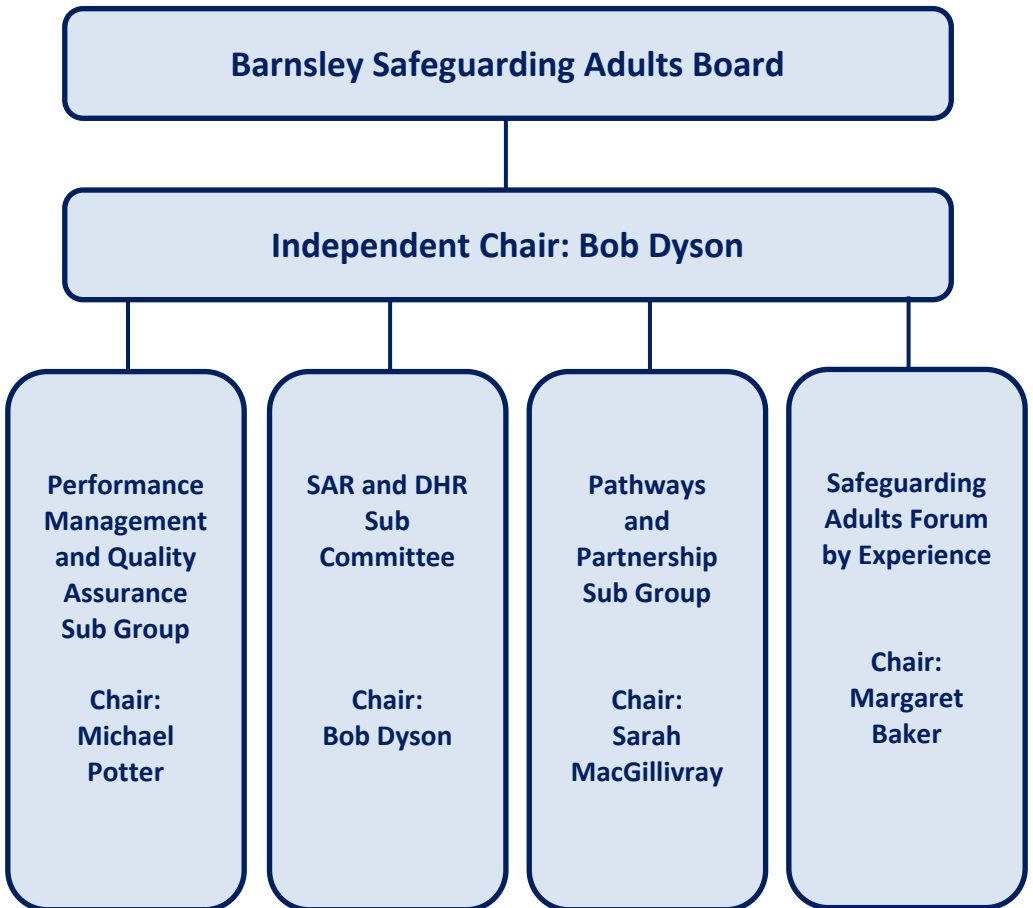
**What the Care Act says we
have to do**

Share our plans showing what we want to achieve in the coming year.

Publish an Annual Report – detailing what we have done to keep people safe and if we have done what we said we would do.

Look at cases when adult dies or are seriously injured as a result of abuse or neglect and all agencies did not work together well (known as Safeguarding Adults Reviews).

Barnsley Safeguarding Adults Board



Safeguarding Adults Board Members

Our Partners



Key Achievements



Developed a **New** Self-Neglect and Hoarding policy; to help workers and volunteers to support adults who self-neglect and/or hoard. (The number of cases of self-neglect and hoarding, locally and regionally is increasing).

Established a Safeguarding Customer Forum – SAFE (Safeguarding Adults Forum (by) Experience) to tell the Board about issues affecting adults who either live with disabilities or care for adults with disabilities. The group has produced a short video to tell you about the work of the group. – <https://www.barnsley.gov.uk/safeguarding>

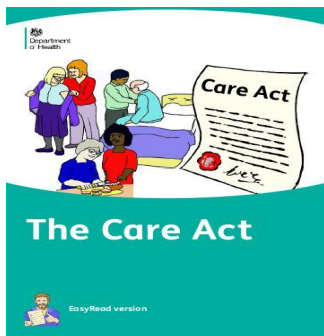


Set up a **NEW** sub group to make sure that workers and volunteers are able to recognise and respond to abuse and help adults to stay safe.

Set up an audit programme to make sure that the policies and education are working. As a result of these audits we have made changes to the concern form used by workers to tell us about an adult who is being harmed or is self-neglecting.

Thanks to all of our partners who **Page 14** worked with us to show the Board what all our partners are doing to prevent harm and abuse every day. Safeguarding is everyone's business and ideally we need to

Key Achievements



Agreed a *People in Positions of Trust Policy* to help stop workers and volunteers who take advantage of adults they work with; moving onto other jobs. Training has been provided for key people in our partner agencies. This is a requirement of the Care Act.

Safeguarding Awareness Week

A large number of events were held for both the public and workers/volunteers, including sessions on the Herbert Protocol – to help the police get adults with dementia back home quickly and safely and recognising and stopping Mate crimes – “friends” who take advantage and hurt adults.



Worked with our partners to agree a set of operational guidance, to help workers and volunteers to keep adults safe or to work with the adult and their family to prevent harm and abuse.

